

## ALLIOLiGHT lighting systems

The new generation of LED lighting



icotek®  
smart cable management



ALLIOLiGHT

Made in Germany



### Why luminaires from icotek?

As a long-standing partner for the industry, icotek is known worldwide for innovative cable entry systems with the highest quality standards. With the acquisition of the luminaire manufacturer Alliolight (all-in-one-light, i.e. luminaires for all areas of application in industry), founded in 1990, we are now expanding our product portfolio around the illumination of enclosures, IT applications as well as machines of all kinds.

Over 30 years of experience in the field of luminaires and accessories as well as renowned customers from all over the world guarantee the highest quality – made in Germany.

Find out more  
now at  
[www.icotek.com](http://www.icotek.com)



## ALLIOLiGHT lighting systems

Efficient LED lighting

for industry and automation

icotek®  
smart cable management

icotek GmbH | Bischof-von-Lipp-Str. 1 | 73569 Eschach | Germany  
Tel. +49 7175 9 23 80-0 | [info@icotek.com](mailto:info@icotek.com) | [www.icotek.com](http://www.icotek.com)

smart cable management

[www.icotek.com](http://www.icotek.com)



# TUBE

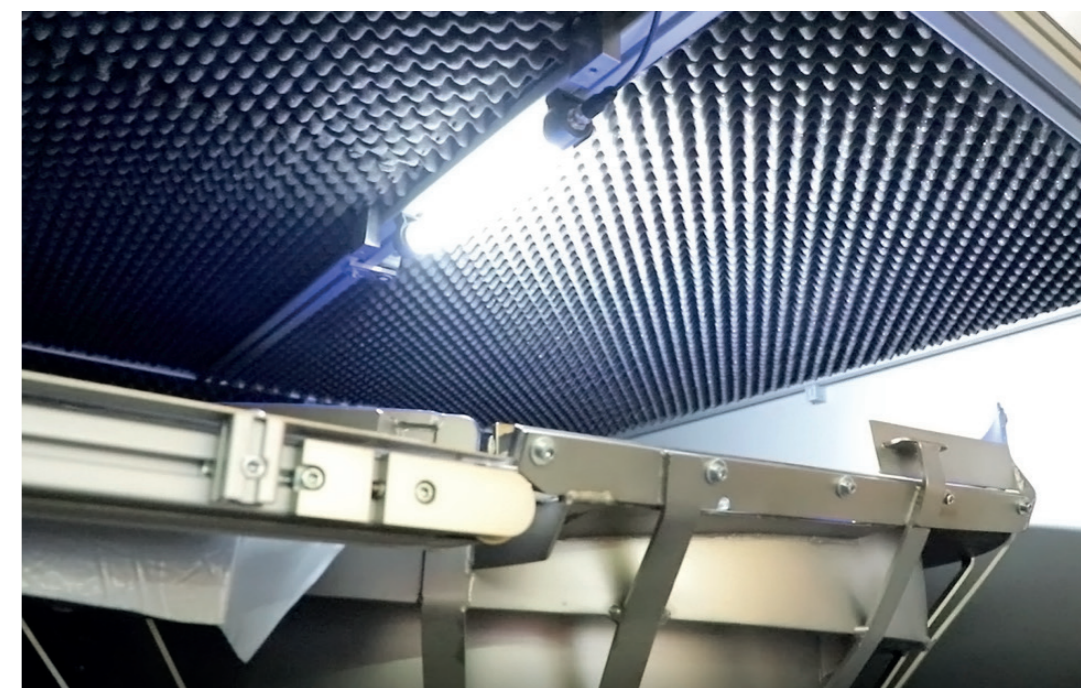
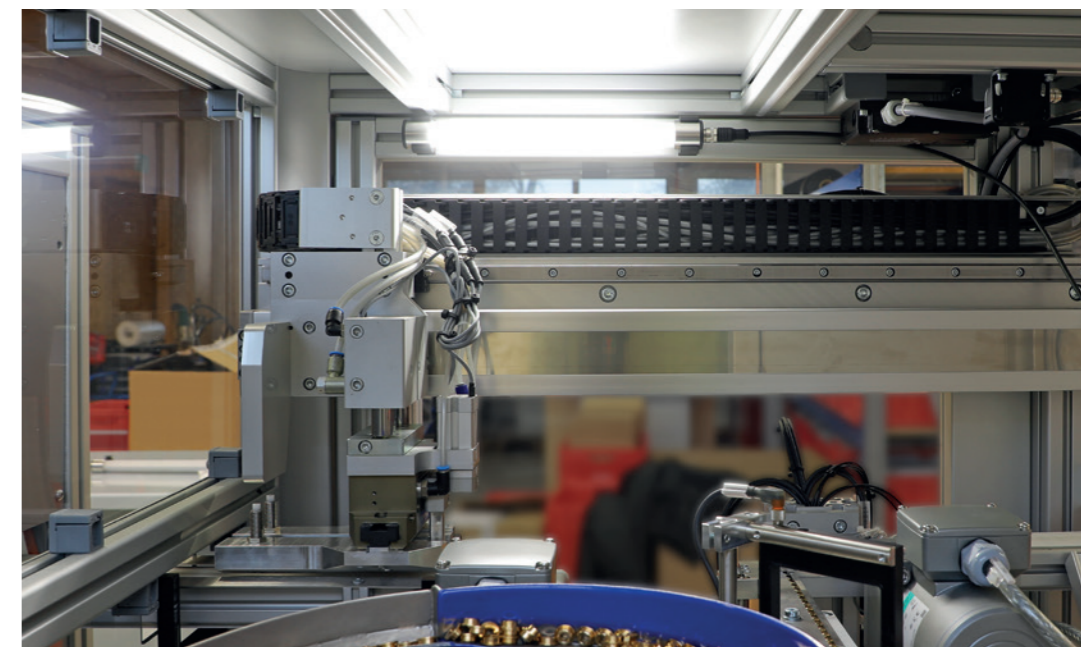
Robust machine luminaire  
with the highest quality standards

## Efficient LED lighting in machinery for industry and automation

The TUBE system luminaire provides effective lighting for machinery and equipment, with M12 connectors for standardised connection.

The luminaire is easy to mount, rotates and offers a circuit-independent service life of 50,000 operating hours.

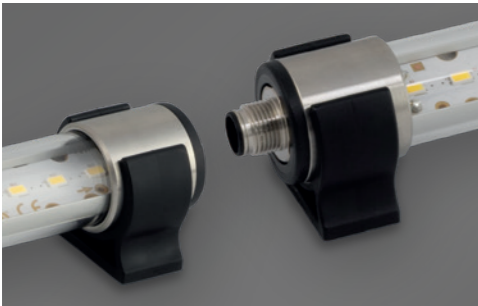
Depending on the application, you can choose different materials for the tubes: the TUBE is available in chemical-resistant borosilicate glass and in impact-resistant polycarbonate. Fluctuating temperatures, oil, water or various chemicals therefore affect neither the luminosity nor the service life.



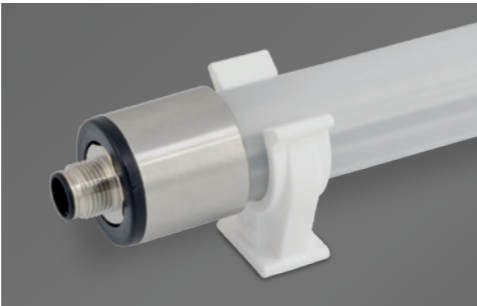
Robust and almost indestructible –  
ideal properties for machine luminaires



Assembly



Assembly with mounting clips (included in the delivery)



smart cable management

Polycarbonate oder borosilicate glass –  
impact resistant or chemical resistant

- Chemical-resistant borosilicate glass or impact-resistant polycarbonate tube
- Protection class IP67
- Completely maintenance-free product
- High energy efficiency thanks to High Power LED
- Compact round design  $\varnothing$  28 mm, suitable for the tightest installation situations
- Easy retrofitting in existing machines
- With rotating LED tube
- Stainless steel end caps
- Cable connection via M12 connector
- Nominal voltage 24 V DC

Products

Type	Length	Tube material	Rated power	Luminous flux	Light colour	Colour rendering index CRI	Protection class	Order No.
TUBE system luminaire 13 W	570 mm	Polycarbonate	13 W	1700 lm	5600 K	> 80	IP67	81500
TUBE system luminaire 26 W	1080 mm	Polycarbonate	26 W	3400 lm	5600 K	> 80	IP67	81501
TUBE system luminaire 8 W	300 mm	Polycarbonate	8 W	1000 lm	5600 K	> 80	IP67	81502
TUBE system luminaire 11,2 W	330 mm	Borosilicate glass	11,2 W	1650 lm	5000 K	> 80	IP67	81503
TUBE system luminaire 16,8 W	615 mm	Borosilicate glass	16,8 W	2770 lm	5000 K	> 80	IP67	81504

Specifications

Tube material	Borosilicate glass or polycarbonate
End caps material	Stainless steel
Mounting clips material	Polypropylene
Protection class	IP67
Protection category	III (Protective extra-low voltage)
Operating temperature	-20°C to +50°C
Tube diameter	24 mm
End caps diameter	28 mm
Service life of illuminant	50 000 hours
Light colour	Borosilicate glass: 5000 K, Polycarbonate: 5600 K



# ALU-LINE

Innovative LED lighting  
for industry and IT applications

## Glare-free LED lighting

## in extremely robust aluminium housing

The ALU-LINE system luminaires provides effective lighting in enclosures for industrial and IT applications. Their aluminium housing makes them particularly high-quality and stable.

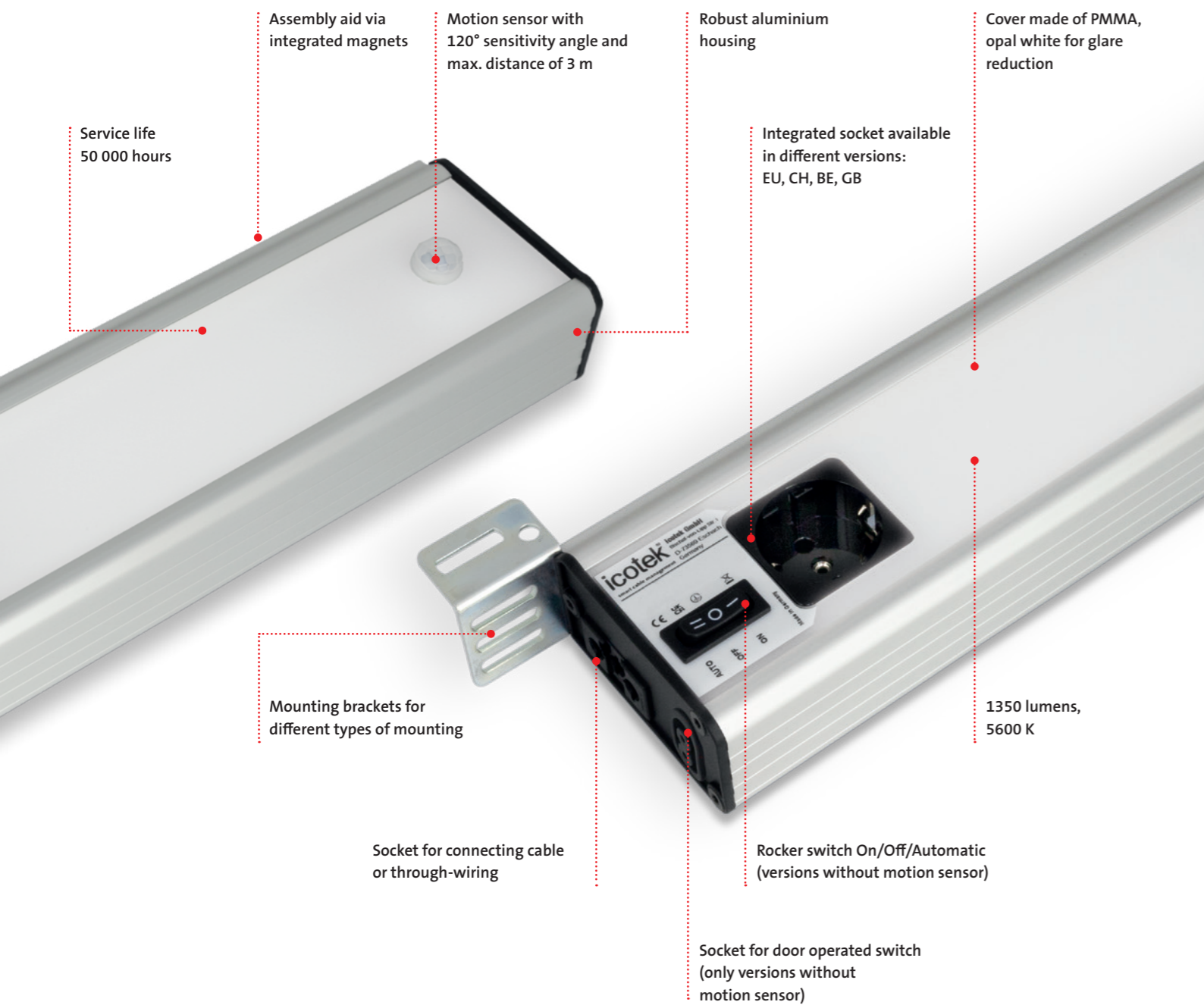
The ALU-LINE luminaire offers an integrated socket as a practical additional benefit. This is available in EU, CH, BE or GB versions.

The High Power LED illuminates with 1350 lumens and provides a balanced homogeneous area light. Another advantage is that the through-wiring of several luminaires is possible.



The right socket for everyone –

practical additional benefit of the ALU-LINE



Assembly



Assembly with screws on profiles



Assembly with screws on surfaces



Assembly on 35 mm top hat DIN rails



Assembly aid via integrated magnets

Automatic switching

with the motion sensor

- Integrated socket available in different versions: EU, CH, BE, GB
- High-quality and stable aluminium housing
- Various mounting types: screw assembly and assembly on top-hat rail 35 mm
- Effective LED lighting with 1350 lm
- Available with motion sensor
- Through-wiring of several luminaires possible

Products

Type	Material	Rated power	Luminous flux Light colour	Colour rendering index CRI	Socket	Protection class	Order No.
ALU-LINE system luminaire   EU	Aluminium, PMMA	12 W	1350 lm 5600 K	> 80	EU	IP20	81300
ALU-LINE system luminaire   BE	Aluminium, PMMA	12 W	1350 lm 5600 K	> 80	BE	IP20	81301
ALU-LINE system luminaire   CH	Aluminium, PMMA	12 W	1350 lm 5600 K	> 80	CH	IP20	81302
ALU-LINE system luminaire   GB	Aluminium, PMMA	12 W	1350 lm 5600 K	> 80	GB	IP20	81303
ALU-LINE system luminaire   EU with motion sensor	Aluminium, PMMA	12 W	1350 lm 5600 K	> 80	EU	IP20	81304
ALU-LINE system luminaire   BE with motion sensor	Aluminium, PMMA	12 W	1350 lm 5600 K	> 80	BE	IP20	81305
ALU-LINE system luminaire   CH with motion sensor	Aluminium, PMMA	12 W	1350 lm 5600 K	> 80	CH	IP20	81306
ALU-LINE system luminaire   GB with motion sensor	Aluminium, PMMA	12 W	1350 lm 5600 K	> 80	GB	IP20	81307

Specifications

Cover material	Polycarbonate
Housing material	Aluminium
Motion sensor	Infrared, illumination time 8 minutes
Protection class	IP20
Protection category	I (Protective conductor connection)
Operating temperature	-20°C to +50°C
Service life of illuminant	50 000 hours
Light colour	5600 K
Luminous flux	1350 lm



**ALLIO**

Compact LED lighting

for industry and IT applications

Lighting in enclosures

for industry and IT applications

With its compact design and 190° rotating tube, the ALLIO system luminaire offers space-saving lighting for enclosures. This also enables easy retrofitting in existing enclosures.

The High Power LED illuminates with 1050 lumens and offers a service life of 50,000 hours. The opal white polycarbonate tube provides a homogeneous, glare-free area light.

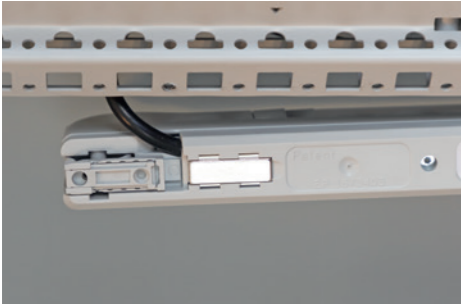


Compact design

for the use in confined spaces



Assembly



Assembly with integrated magnets



Assembly with screws on profiles and surfaces



Snap-in assembly in the 19" rack

Flexible, durable and bright –

ideal properties for the system luminaires

- Compact design with 190° rotating LED tube
- Various mounting types: with magnets, screw assembly or snap-in assembly in the 19" server rack
- Easy retrofitting in existing enclosures
- Effective LED lighting with 1050 lumens
- Available with motion sensor
- Door operated switch available as an option

Products

Type	Tube material	Rated voltage	Rated power	Luminous flux Light colour	Colour rendering index CRI	Protection class	Order No.
ALLIO system luminaire	Polycarbonate	24 V DC	7,2 W	1050 lm 5600 K	> 80	IP20	81100
ALLIO system luminaire with motion sensor	Polycarbonate	24 V DC	7,2 W	1050 lm 5600 K	> 80	IP20	81101
ALLIO system luminaire	Polycarbonate	230 V AC	7,2 W	1050 lm 5600 K	> 80	IP20	81102
ALLIO system luminaire	Polycarbonate	230 V AC	7,2 W	1050 lm 5600 K	> 80	IP20	81103
ALLIO system luminaire	Polycarbonate	100 – 240 V AC	7,2 W	1050 lm 5600 K	> 80	IP20	81104
ALLIO system luminaire with motion sensor	Polycarbonate	100 – 240 V AC	7,2 W	1050 lm 5600 K	> 80	IP20	81105

Specifications

Tube material	Polycarbonate
Housing material	Polycarbonate
Housing colour	RAL 7035, similar light grey
Motion sensor	Infrared, illumination time 30 seconds
Protection class	IP20
Protection category	II (Protective insulation)
Operating temperature	-20°C to +50°C
Service life of illuminant	50 000 hours
Light colour	5600 K
Luminous flux	1050 lm

ALLIOLiGHT system luminaires

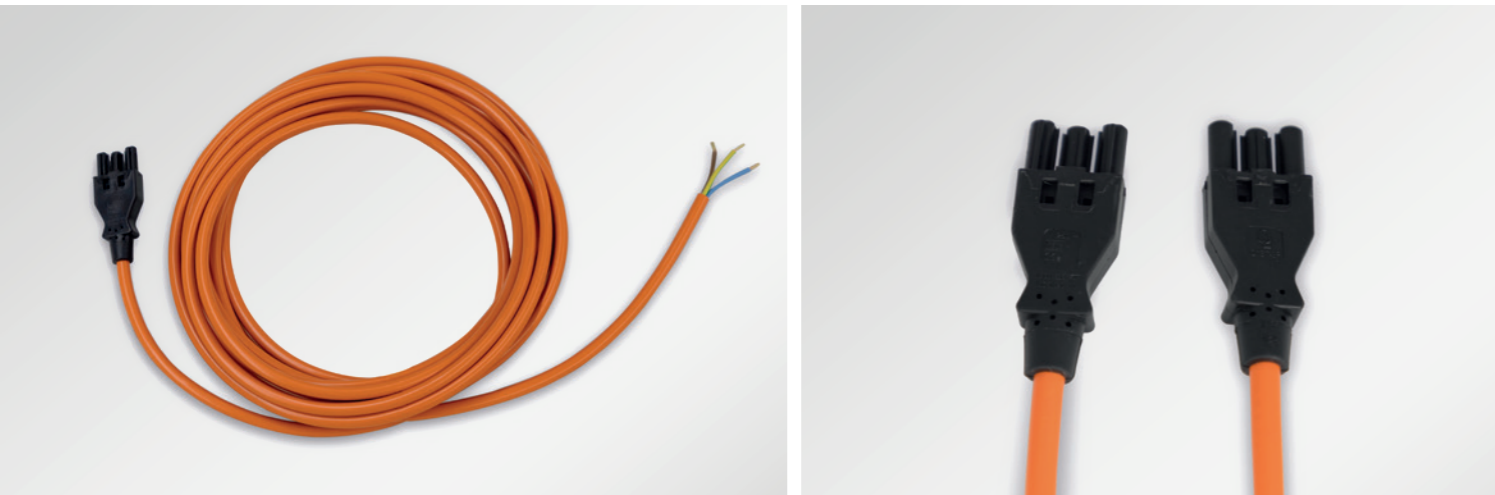
also offer the matching accessories

Accessories for TUBE



Description	Length	Version	Colour	Order No.
Connecting cable	5 m	M12 connector female, open cable end	black	81530
Connecting cable	10 m	M12 connector female, open cable end	black	81531

Accessories for ALU-LINE



Description	Length	Version	Order No.
Connecting cable	3 m	Connector GST18 female, wire end ferrules	81330

Description	Length	Version	Order No.
Connection cable	0.6 m	Connector GST18 female, male	81331
Connection cable	1.0 m	Connector GST18 female, male	81332

ALLIOLiGHT system luminaires

for every application

Accessories for ALLIO



Description	Surface	Colour	Order No.
Panel for 19" rack	powder-coated	RAL 7035 light grey	81530
Panel for 19" rack	powder-coated	RAL 9005 black	81531

Accessories for ALU-LINE and ALLIO



Description	Length connection cable	Connector	Order No.
Door operated switch	1.5 m	angled	81333
Door operated switch	0.6 m	angled	81334
Door operated switch	0.6 m	straight	81132
Door operated switch	1.5 m	straight	81133